

Mode d'emploi - La Petite S013
User Manual - La Petite S013
Gebrauchsanweisung - La Petite S013
Modo de empleo - La Petite S013

Des solutions adaptées à tous vos besoins - Solutions to meet all your needs
All Ihren Bedürfnissen angepaßte Lösungen - Soluciones adaptadas a todas sus necesidades

ARMOIRES À VINS - WINE CABINETS WEINKLIMASCHRÄNKE - ARMARIOS PARA VINOS



Sowine



Gamme 92



Classic



Compact



Origine



La Petite S013



Cuir - Leather - Leder - Cuero



Meuble à Vins



Sommelier



Elite

SYSTÈMES DE RANGEMENT - STORAGE SYSTEMS REGALSYSTEME - SISTEMAS DE COLOCACIÓN



Modulothèque



Modulocube



Modulorack

**CLIMATISEURS DE CAVE
CELLAR CONDITIONERS
WEINKELLERKLIMAGERÄTE
CLIMATIZADORES PARA BODEGA**

**GAMME EUROCAVE PROFESSIONAL
EUROCAVE PROFESSIONAL RANGE
REIHE EUROCAVE PROFESSIONAL
GAMA EUROCAVE PROFESSIONAL**



Inoa*



Dual Zone



Vin au Verre*

* Produit non disponible dans certains pays. Product not available in certain countries.

WELCOME TO THE WORLD OF EUROCAVE

Our biding desire is to support your passion for wine throughout the years... To do so, EuroCave has used all of its expertise to bring together the five essential criteria for serving wine:

Temperature

The two enemies of wine are extreme temperatures and sudden changes in temperature. A constant temperature allows the wine to fully develop.

Humidity

It's an essential factor, allowing the corks to retain their sealing properties. The level of humidity must be greater than 50% (ideally between 60 and 75%).

Protection from Light

Light, particularly its U.V. component, causes wine to quickly deteriorate by irreversible oxidation of tannins. It is therefore strongly recommended that you store wine in a dark place or protected from U.V. light.

Vibration

Vibrations disturb wine's slow biochemical development process and are often fatal for your finest wines. The "Main du Sommelier" supports adapt to the shape of the bottle and protect it from vibrations (anti-vibration technology).

Storage

Moving bottles too often is harmful to wine. Having suitable storage that limits handling is essential.

All of these specific features are found in the La Petite S013 wine cabinet by EuroCave that you have just purchased. Thank you for placing your trust in us.

Standard wine serving temperatures			
French wines		Australian wines	
Alsace	10 °C	Cabernet franc	16 °C
Beaujolais	13 °C	Cabernet sauvignon	17 °C
Sweet white Bordeaux	6 °C	Chardonnay	10 °C
Dry white Bordeaux	8 °C	Merlot	17 °C
Bordeaux reds	17 °C	Muscat à petit grain	6 °C
Burgundy whites	11 °C	Pinot noir	15 °C
Burgundy reds	18 °C	Sauvignon blanc	8 °C
Champagne	6 °C	Semillon	8 °C
Jura	10 °C	Shiraz	18 °C
Languedoc-Roussillon	13 °C	Verdhelo	7 °C
Provence Rosé	12 °C		
Savoie	9 °C	Other wines	
Dry white Loire wines	10 °C	Californie	16 °C
Sweet white Loire wines	7 °C	Chilean	15 °C
Loire reds	14 °C	Spanish	17 °C
Rhône wines	15 °C	Italian	16 °C
Sweet wines from the South-West	7 °C		
Reds from the South-West	15 °C		



1 - Description of your wine cabinet

5



2 - Important safety recommendations

6



3 - Power supply

6



4 - Protecting the environment and energy-saving

6



5 - Installing your wine cabinet

7



6 - Commissioning your cabinet

7



7 - Using your cabinet

8



8 - Everyday maintenance

9



9 - Operating faults

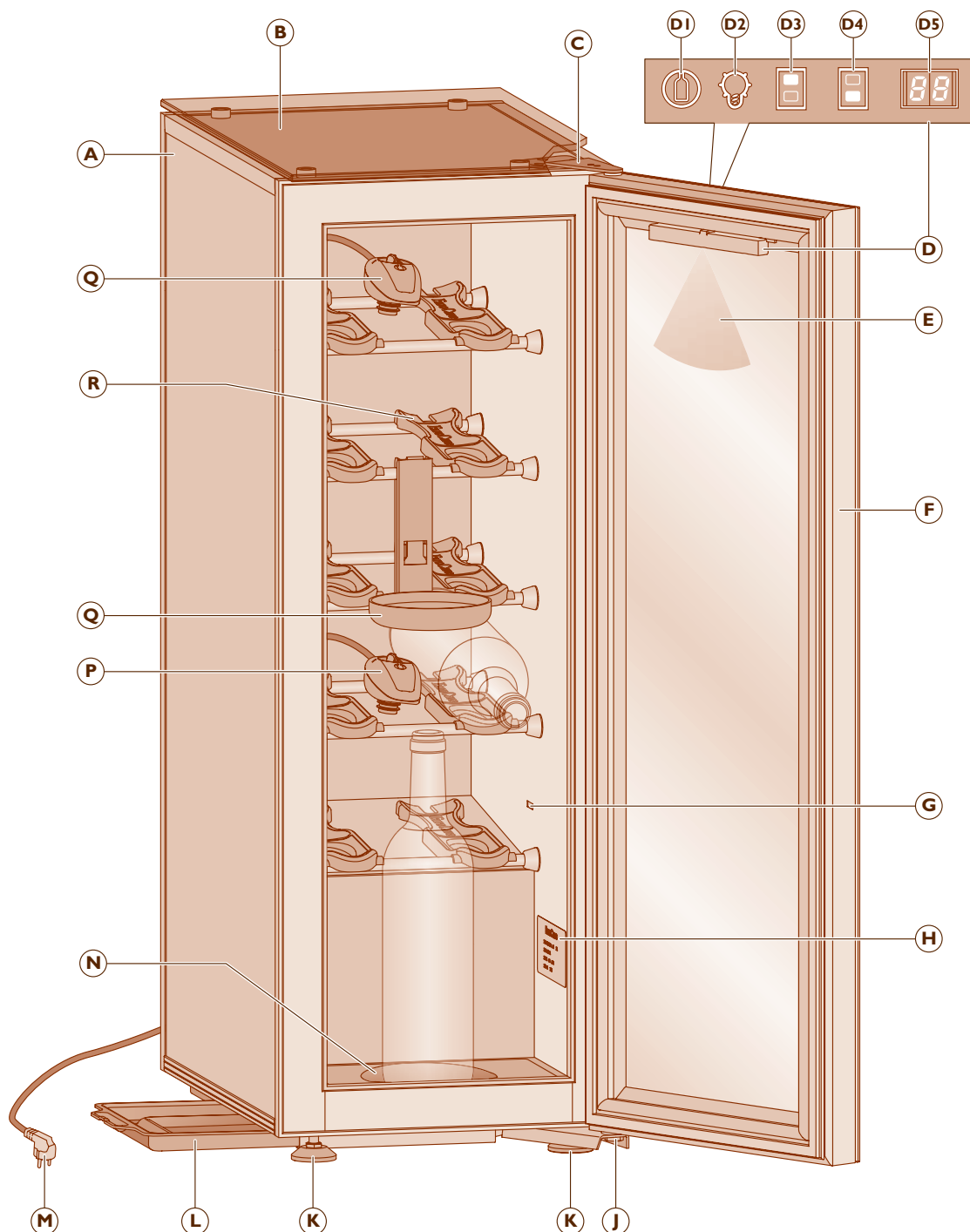
9



10 - Technical features

9

I - DESCRIPTION OF YOUR WINE CABINET



A Cabinet body

B Glass plate

C Upper hinge

D External control panel

D1 Oxygen extraction ON/OFF key.
Key backlighted if ON

D2 Lighting ON/OFF key. Key backlighted if ON

D3 Key for setting the temperature of the top of the cabinet

D4 Key for setting the temperature of the bottom of the cabinet

D5 Temperature display

E Lighting

F Full Glass door

G Location of the temperature sensor

H Product identification label

J Lower hinge

K Adjustable front feet

L Condensation collection tray

M Power lead

N Bottle supports

P Oxygen extraction heads

Q Main Du Sommelier support



2 - IMPORTANT SAFETY RECOMMENDATIONS

Carefully read these operating instructions before using your appliance for the first time and retain them for future reference.

Using your appliance in a way that does not comply with the operating instructions may damage it.

- Never use the appliance for anything other than its specific purpose, as described in these operating instructions.
- Unplug your appliance when you are not using it for extended periods.
- Before carrying out any servicing or maintenance, unplug the appliance.
- Never unplug the appliance by pulling the cable, but by the plug.
- Never use a split power lead or one showing signs of wear along its length.
- Immediately replace damaged leads (contact your EuroCave dealer).
- Only use the power lead supplied with the appliance, only plug it into an earthed wall socket.
- Your appliance is only intended for indoor use (ideal operating ambient temperature 18 °C - 30 °C).
- If the cable, plug or appliance appear to be damaged or are not functioning correctly, contact your EuroCave dealer.

- Never put the appliance, power lead or plug in water or any other liquid. Never fill the appliance with water or other liquid.
- Do not let the power lead hang within reach of children, over a square corner or close to a source of heat.
- Do not place the appliance on a hot surface such as a hotplate, do not use close to a source of heat (radiator, naked flame, window...).
- Place the appliance on a flat, stable and non-flammable surface, at a suitable distance from sinks or taps, to avoid splashes from water or other liquid.
- This appliance was not designed to be used by persons (including children) with reduced physical, sensorial or mental abilities, or by persons without experience or knowledge, except when they benefit, by a person responsible for their safety, from supervision or prior instructions on how to use the appliance. Children should be supervised to ensure that they do not play with the appliance.



3 - POWER SUPPLY

i

For your personal safety, the wine cabinet must be correctly earthed. Ensure that the plug is correctly earthed and that your installation is protected by a circuit breaker (30 mA*).

*not applicable to some countries.

The wine cabinet power lead has a plug to be plugged into a standard earthed socket to prevent any risk of electric shock.



Have the mains socket inspected by a qualified electrician who will check that it is correctly earthed and will carry out, if need be, work to bring your installation into line with standards.

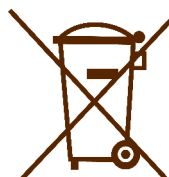
Contact your usual EuroCave dealer to change the power lead if it is damaged. It must be replaced by a part which has an original manufacturer's guarantee.



If you are moving to a foreign country, check whether or not the cabinet's characteristics correspond to the country (voltage, frequency).



4 - PROTECTING THE ENVIRONMENT AND ENERGY-SAVING



Disposing of packaging

The packaging used by EuroCave is produced in recyclable materials.

After unpacking your cabinet, take the packaging to a refuse collection point. For the most part, it will be recycled.

Recycling: a caring gesture

Electronic and electrical equipment has potentially harmful effects on the environment and human health, owing to the presence of dangerous substances.

Therefore, you must not trash electrical and electronic equipment with non-sorted municipal waste.

When purchasing a new EuroCave product (wine cabinet, cellar conditioner, Vin au Verre), you can entrust the recycling of your old appliance to your EuroCave dealer.

Speak to your EuroCave dealer, he will advise you on the disposal and collection arrangements set up within the EuroCave network.

In compliance with legislation on protecting and caring for the environment, your wine cabinet does not contain C.F.C.s.

Energy-saving

- Install your cabinet in a suitable location (see following page) and observe the recommended temperature ranges.
- Keep the door open only for very short periods.
- Ensure that the door seal is intact and that it is not damaged. If it is, contact your EuroCave dealer..

Disable unusable appliances by unplugging them and removing the power lead.

5 - INSTALLING YOUR WINE CABINET



Unpacking

- Check, when your cabinet is delivered, that it does not have any external faults (impact, warping...).
- Open the door and check the integrity of the inside of your appliance (walls, Main du Sommelier supports, hinges, bottle support...).

If there is a problem, contact your EuroCave dealer.

Installation



When moving the cabinet, do not tilt it more than 45° and always on the lateral side, on the side of the flexible cord.

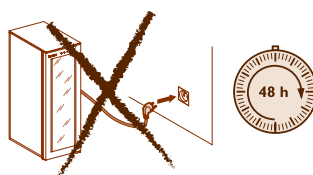
Transport your cabinet to the chosen location.

It must:

- be open on the outside to allow air to circulate (not a closed cupboard...)
- not be too damp (laundry room utility room, bathroom...),
- have a stable, flat floor,
- have a power supply (standard socket, 16 A, earthed with circuit breaker, 30 mA* (*not applicable to some countries).

Precautions

- Do not place your cabinet in an area likely to be flooded.
- Do not position your cabinet near to a source of heat or expose it to the effects of direct sunlight.
- Prevent water from splashing on the entire rear section of the appliance.
- Position your appliance so that there is a minimum space of 5 – 10 cm between the wall and the rear wall of your cabinet.
- The glass plate must never come into direct contact with the work surface.
- If you are positioning your cabinet under a work surface, leave a minimum space of 2 cm all around the appliance including under the work surface. Allow for a ventilation grill on the work surface (recommended).
- Arrange the power lead so that it is accessible and does not come into contact with any component of the appliance..
- Slightly tilt the cabinet backwards to adjust the front feet (adjusted by screwing or unscrewing), so that you can level your cabinet (use of a spirit level is recommended).
- Remove the protective elements inside your cabinet.



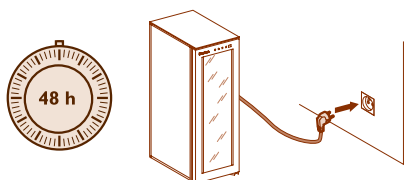
6 - COMMISSIONING YOUR CABINET



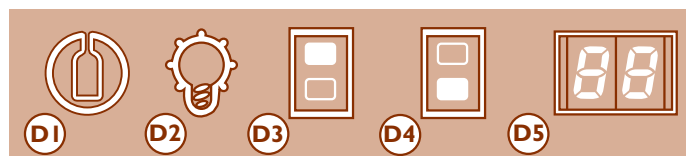
I. Connection



Have your plug checked (presence of fuses, amps and 30 mA circuit breaker).
Do not plug several cabinets into a multi-socket.



II. Description



- D1** Oxygen extraction ON/OFF key.
Key backlighted if ON
- D2** Lighting ON/OFF key. Key backlighted if ON
- D3** Key for setting the temperature of the top of the cabinet
- D4** Key for setting the temperature of the bottom of the cabinet
- D5** Temperature display

The EuroCave La Petite S013 cabinet is a multi-temperature cabinet.

When first starting up, the display indicates a temporary temperature.

All temperature setting is carried out from the control panel located on the door.

- 1 Press one of the 2 temperature setting keys (top or bottom) of the cabinet, depending on your choice, for approximately 5 seconds.
The display starts to flash.

Set the temperature, degree by degree, by successively pressing the key.

- 2 When you have reached the desired setting, stop pressing and wait for the display to return to its initial status.



The value on the display is the actual temperature inside the cabinet, it is therefore necessary to wait before your new setting takes effect.

It is normal for the top glass plate to be hot. Ensure that you do not place any object sensitive to heat on this plate.



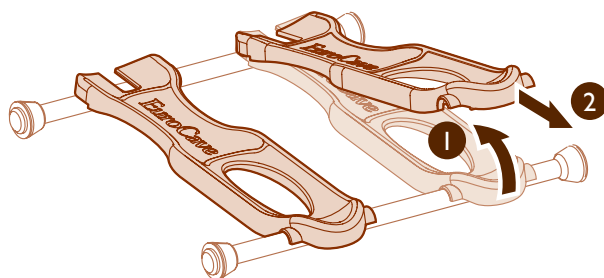
Depending on your requirements, you can set either the low temperature or the high temperature.
The temperature can be set between 6 - 12 °C for the bottom and between 16 - 22 °C for the top.
The recommended temperature setting for the bottom of the cabinet is 8 °C; the upper section of the cabinet will automatically be at 18 °C.
The last temperature set shall remain in effect with a differential of 10°C between the top and the bottom.
Recommended ambient temperature of 18 - 30 °C.
The cabinet's output varies according to the ambient temperature.



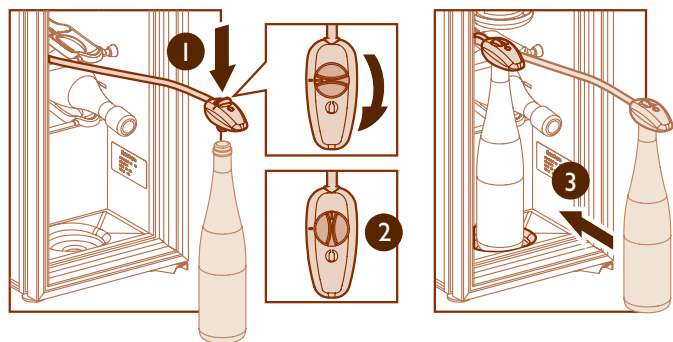
7 - USING YOUR CABINET

I. Main du Sommelier bottle supports

10 Main du Sommelier bottle supports are available in your wine cabinet. In order to change or replace one or several supports, gently detach the front section and pull towards you.



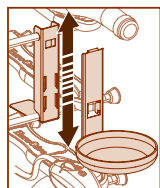
Preserving your opened bottles



Preservation

The oxygen extraction device removes oxygen from the bottle, which is responsible for oxidation.

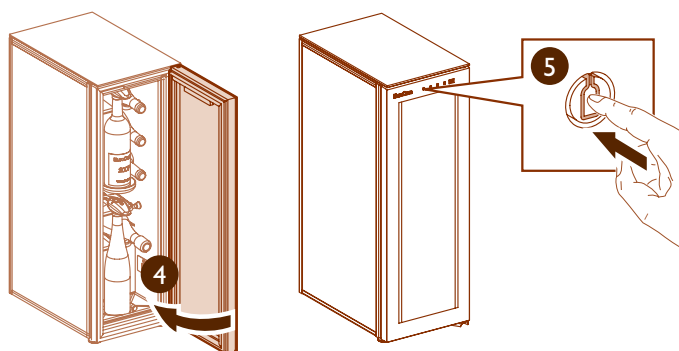
- 1 Push the oxygen extraction bung into the bottleneck (ensure that there is nothing that might obstruct the neck of the bottle) by gently pulling the cord of the oxygen extraction bung.
- 2 Give a 1/4 turn, towards the right, to the button located on the oxygen extraction head (open position).




- 3 Place the opened bottle on one of the two mountings (2 positions possible depending on bottle height).



The oxygen extraction heads must never be used for fizzy wines (such as Champagne), only for still wines.



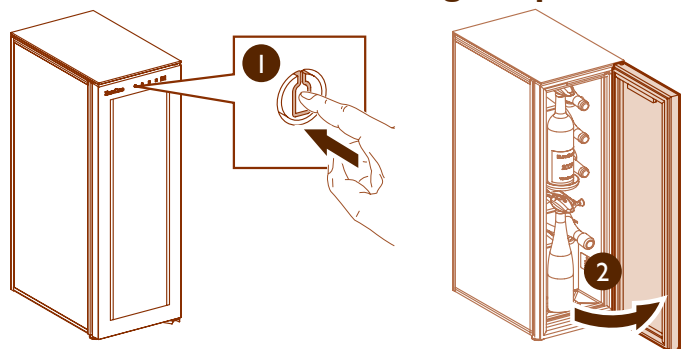
- 4 Close the door.


- 5 Press the key  which is lit so that it is in the ON position. Oxygen extraction is activated (the appliance functions independently).

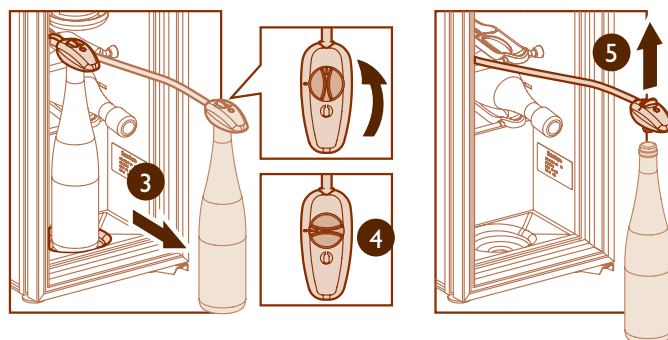


In the event of a power cut, the temperature settings are saved, it is not necessary to repeat the oxygen extraction process, the cabinet remembers all the most recent settings.

To remove a bottle at serving temperature



- 1 Press the key  to stop oxygen extraction.
- 2 Open the door.
- 3 Remove the bottle.



- 4 Turn the oxygen extraction bung to closed position.
- 5 Take off the head to release the bottle.

8 - EVERYDAY MAINTENANCE



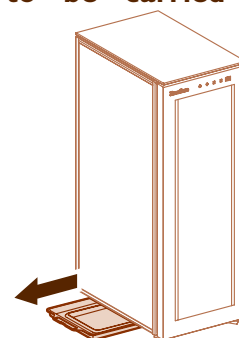
Your wine cabinet is an appliance with tried and tested performance.



Regularly inspecting your wine cabinet and informing your dealer of any anomaly, will ensure that your appliance provides you with years of faithful service.





Maintenance operations to be carried out approximately once a year

- Unplug and unload the wine cabinet
- Clean the condensation collection tray, located under the cabinet. Access is via the left only.
- Clean the inside of the cabinet with water and a gentle cleaning product.
- Rinse thoroughly.



9 - OPERATING FAULTS



Possible incidents	Causes	Corrective action
 key is flashing	Oxygen extraction fault alarm	<ul style="list-style-type: none"> • The bottle may be incorrectly positioned: remove the bottle then centre it correctly in the compartment and press the key again. • The neck of the bottle is obstructed by an object (cork or other): remove anything that might be obstructing the bottleneck, then place the bottle in the compartment and restart the procedure.
 key is still flashing even though I have performed the corrective action above	Oxygen extraction fault alarm	Contact your EuroCave dealer.
 display is flashing	Sensor fault alarm	Contact your EuroCave dealer.
 display is not showing the requested temperature		Wait for the cabinet to reach the desired temperature (at least 48 hrs in extreme conditions).



If your appliance appears to be functioning abnormally, contact your EuroCave dealer.

10 - TECHNICAL FEATURES



S013						
Height mm	Width mm	Depth mm	Weight when empty kg	Permitted temperature range		Consumption per 24 h* (kWh)
				T° min	T° max	
850	297	462	25	18	30	0,44

* Consumption per 24 hrs, measured with an external temperature of 20 °C.
Setting accuracy: +/-1 °C, Display accuracy: +/- 1 °C.



The use of glass doors can alter the performance of your wine cabinet in some extreme temperature conditions.

Standards

Your product meets the following standards:

1 SAFETY 2006/95/EC

Standards EN60335-1 : 2002+A1+A2+A11+A12+A13

EN60335-2-24 : 2003+A1+A2+A11

2 CEM 20004/108/EC

Standard EN55014-1/2